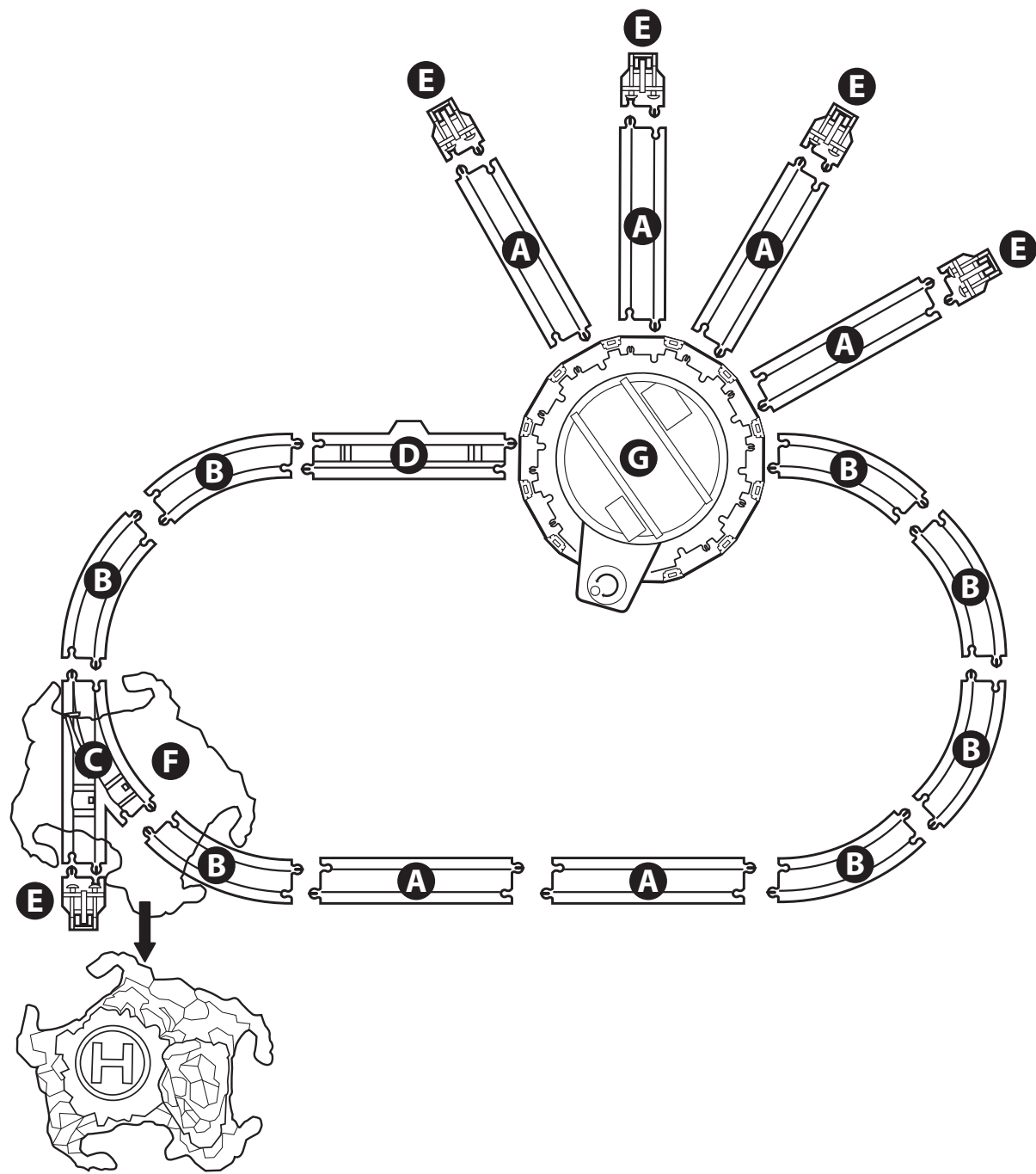


Track Layout



Checklist

A X 6	B X 7	C X 1	D X 1
Straight	Curve	Turn Out (Left)	Stop/Go Track
E X 5	F X 1	G X 1	
Buffer Stop	3-Way Tunnel	Turntable x 1 Outer Walls x 2 Doors x 4 Support Columns x 2	Tidmouth Sheds
			Thomas

NOTE: Adults should remove & discard rubber bands holding tracks together.

BATTERY INSTALLATION

Unscrew and lift cover away from Thomas. Install batteries as indicated inside the battery compartment. For longer life use only alkaline batteries. If this toy begins to operate erratically, you may need to reset the electronics. Remove the batteries from the toy and replace it. Requires 1 AA (LR6) batteries.

BATTERY SAFETY INFORMATION

- In exceptional circumstances batteries may leak fluids that can cause a chemical burn injury or ruin your toy (product). To avoid battery leakage:
 - Non-rechargeable batteries are not to be recharged.
 - Rechargeable batteries are to be removed from the product before being charged (if designed to be removable).
 - Rechargeable batteries are only to be charged under adult supervision (if designed to be removable).
 - Do not mix alkaline, standard (carbon-zinc), or rechargeable (nickel-cadmium) batteries.
 - Do not mix old and new batteries.
 - Only batteries of the same or equivalent type as recommended are to be used.
 - Batteries are to be inserted with the correct polarity.
 - Exhausted batteries are to be removed from the product.
 - The supply terminals are not to be short-circuited.
 - Dispose of battery(ies) safely.
 - Do not dispose of this product in a fire. The batteries inside may explode or leak.

This equipment has been tested and found to comply with the limits for a Class B digital device, pursuant to part 15 of the FCC rules. These limits are designed to provide reasonable protection against harmful interference in a residential installation. This equipment generates, uses and can radiate radio frequency energy and, if not installed and used in accordance with the instructions, may cause harmful interference to radio communications. However, there is no guarantee that interference will not occur in a particular installation. If this equipment does cause harmful interference to radio or television reception, which can be determined by turning the equipment off and on, the user is encouraged to try to correct the interference by one or more of the following measures:

Reorient or relocate the receiving antenna. Increase the separation between the equipment and receiver. Connect the equipment into an outlet on a circuit different from that to which the receiver is connected. Consult the dealer or an experienced radio/TV technician for help.

NOTE: Changes or modifications not expressly approved by the manufacturer responsible for compliance could void the user's authority to operate the equipment.

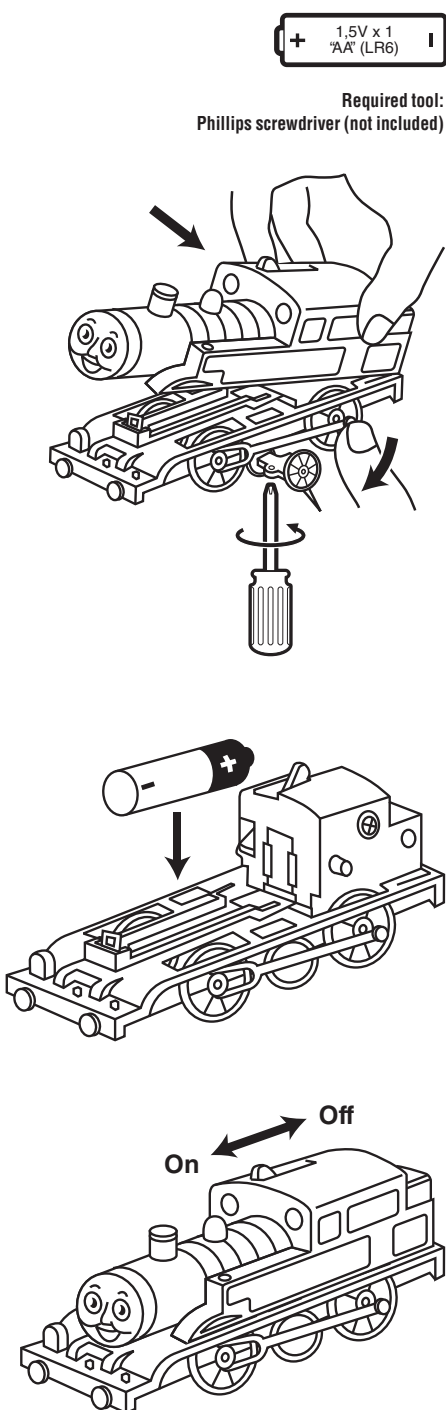
This device complies with part 15 of the FCC Rules. Operation is subject to the following two conditions:

(1) This device may not cause harmful interference, and
(2) this device must accept any interference received, including interference that may cause undesired operation.

• THIS CLASS B DIGITAL APPARATUS COMPLIES WITH CANADIAN ICES-003.
• CET APPAREIL NUMERIQUE DE LA CLASSE B EST CONFORME A LA NORME NMB-003 DU CANADA.

• Operation is subject to the following two conditions: (1) this device may not cause interference, and (2) this device must accept any interference, including interference that may cause undesired operation of the device.

• Utilisation de ce produit est sujette aux conditions suivantes: (1) il ne doit pas produire de brouillage et (2) il doit pouvoir tolérer tout brouillage reçu, même si ce brouillage est susceptible de compromettre son fonctionnement.



Protect the environment by not disposing of this product with household waste (2002/96/EC). Check your local authority for recycling advice and facilities (Europe only).

CONSUMER ASSISTANCE

24 hours a day, 7 days a week
1-800-333-3322 (Australia)
service.fisher-price.com

Fisher-Price, Inc., 636 Grand Avenue, East Aurora, NY 14052.
Headquarters/Importers: 1-800-333-3322
Outside the United States:
Canada: Mattel Canada Inc., 6155 Freemont Blvd., Mississauga, Ontario L5R 3W2; www.service.mattel.com.
Great Britain: Mattel UK Ltd, Vinwell Business Park, Madingley Rd, 4th Flr, Hildesheim, 02028 200203, www.service.mattel.com/uk
Mattel Europe B.V., Gouda 1, 1166 MJ Amstelveen, Nederland.
Australia: Mattel Australia Pty Ltd., 658 Church Street, Locked Bag 8870, Richmond, Victoria 3121 Australia.
New Zealand: 16-18 Willem Picking Drive, Mervyn 2023, Auckland.

Thomas the Tank Engine & Friends™
CREATED BY BRISTOL ALLCROFT
Based on the Railway Series by The Reverend W Awdry.
© 2010 Gullane (Thomas) Limited.
Thomas the Tank Engine & Friends and Thomas & Friends are trademarks of Gullane (Thomas) Limited.
© HIT Entertainment Limited.
HIT and the HIT logo are trademarks of HIT Entertainment Limited.
East Aurora, NY 14052 U.S.A.
PRINTED IN CHINA.
Manufactured for Fisher-Price ©2010 Mattel, Inc. All Rights Reserved.
Mattel East Asia Ltd., Room 1108, South Tower, World Finance Centre, Harbour City, Tsimshatsui, HK, China.

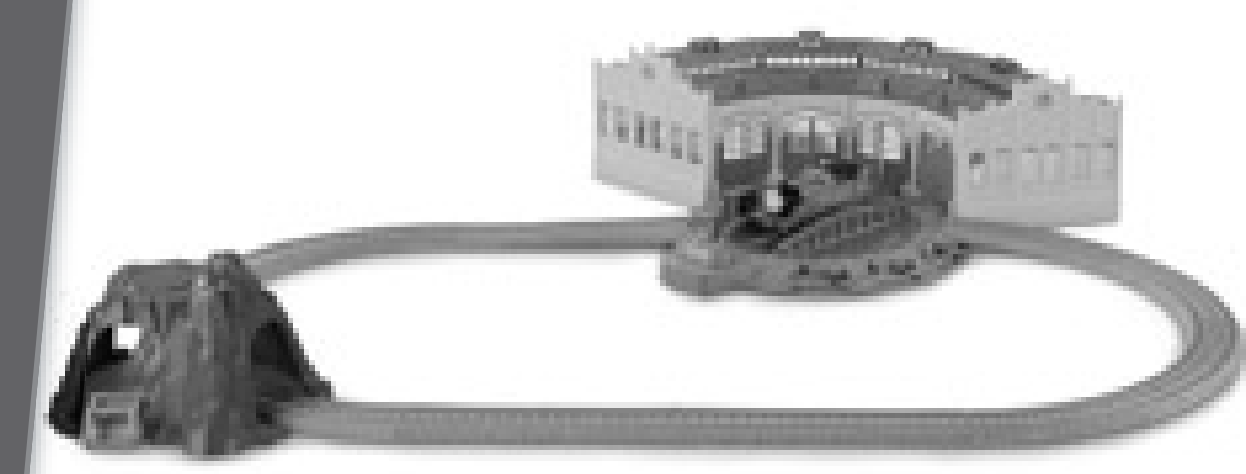
CAUTION:
To prevent entanglement,
keep hair away from wheels.

V1578
Fisher-Price

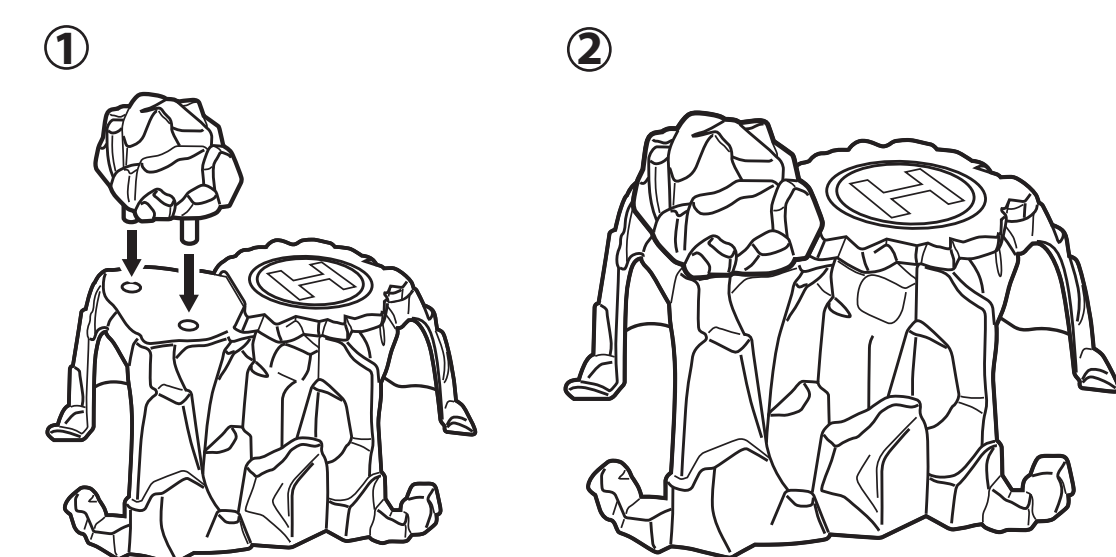
THOMAS & FRIENDS TRACKMASTER TIDMOUTH SHEDS

INSTRUCTIONS

Please keep these instructions for future reference as they contain important information.

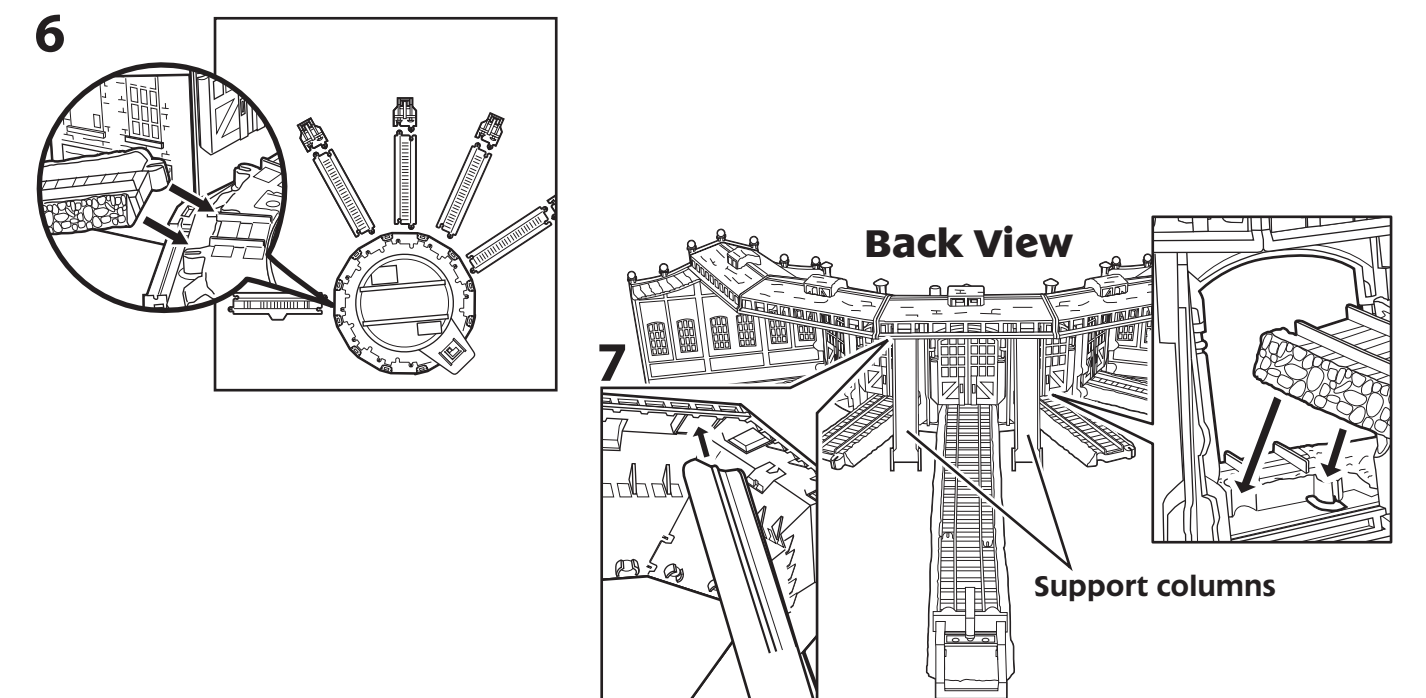
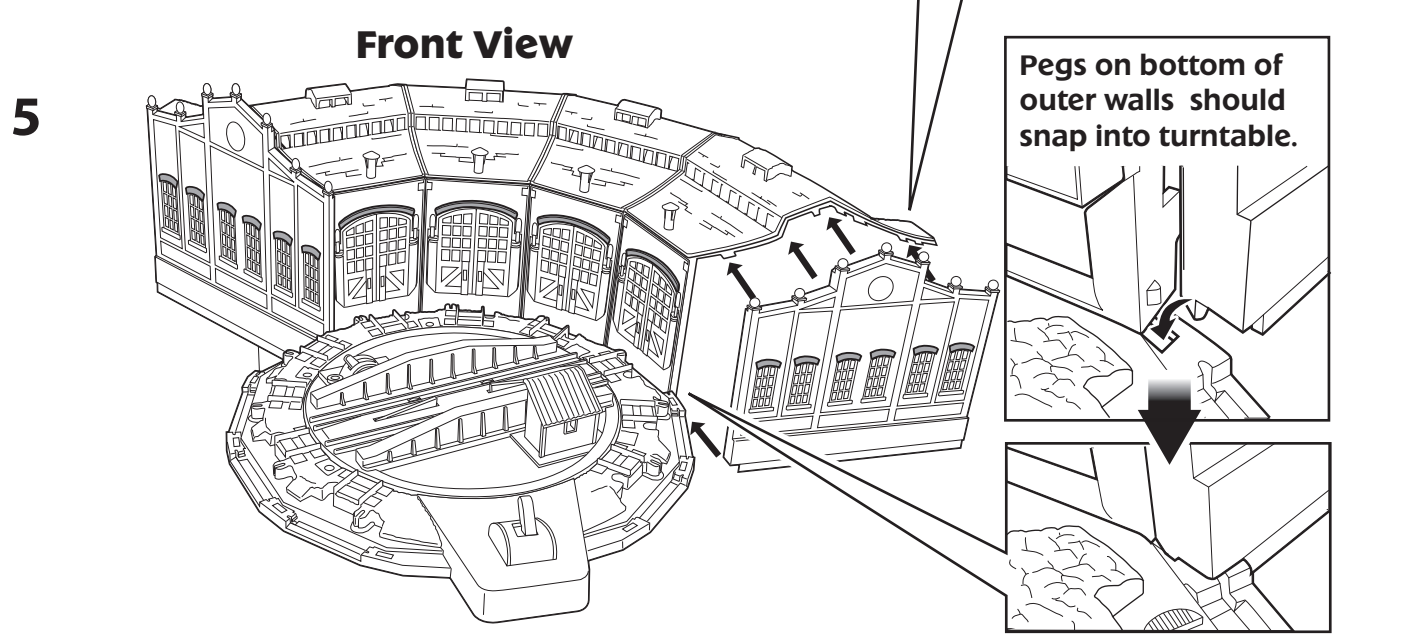
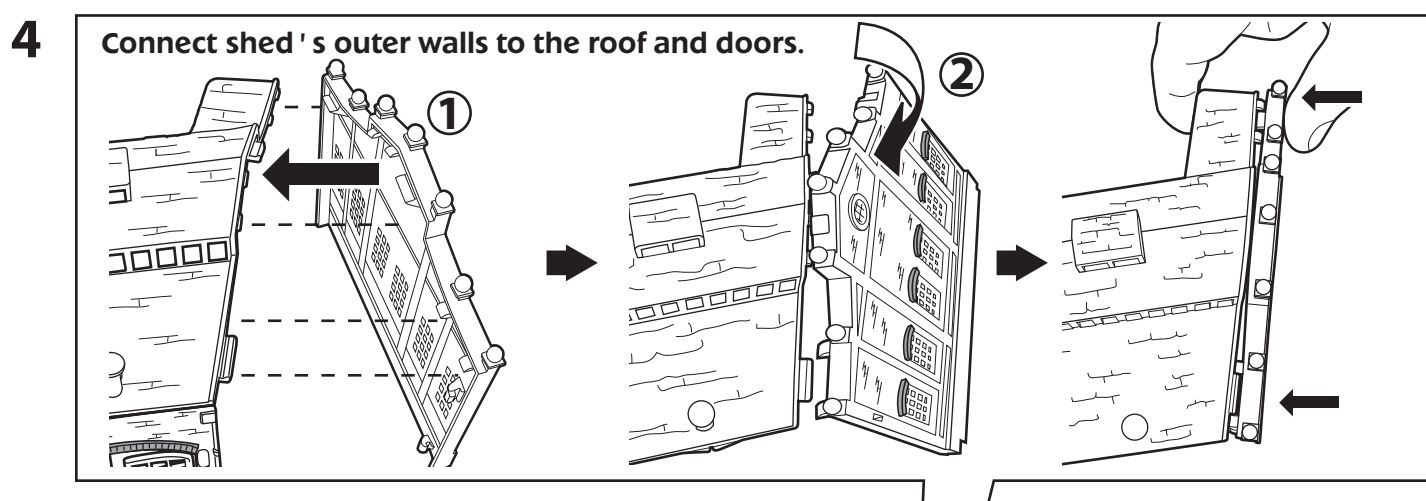
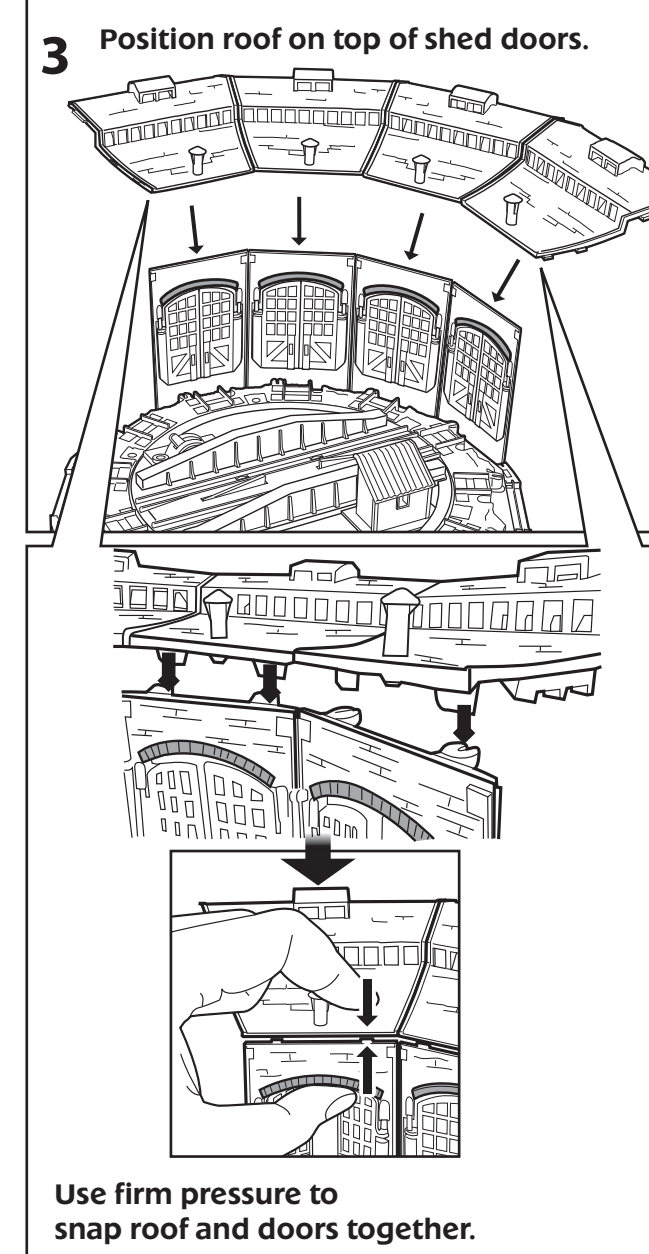
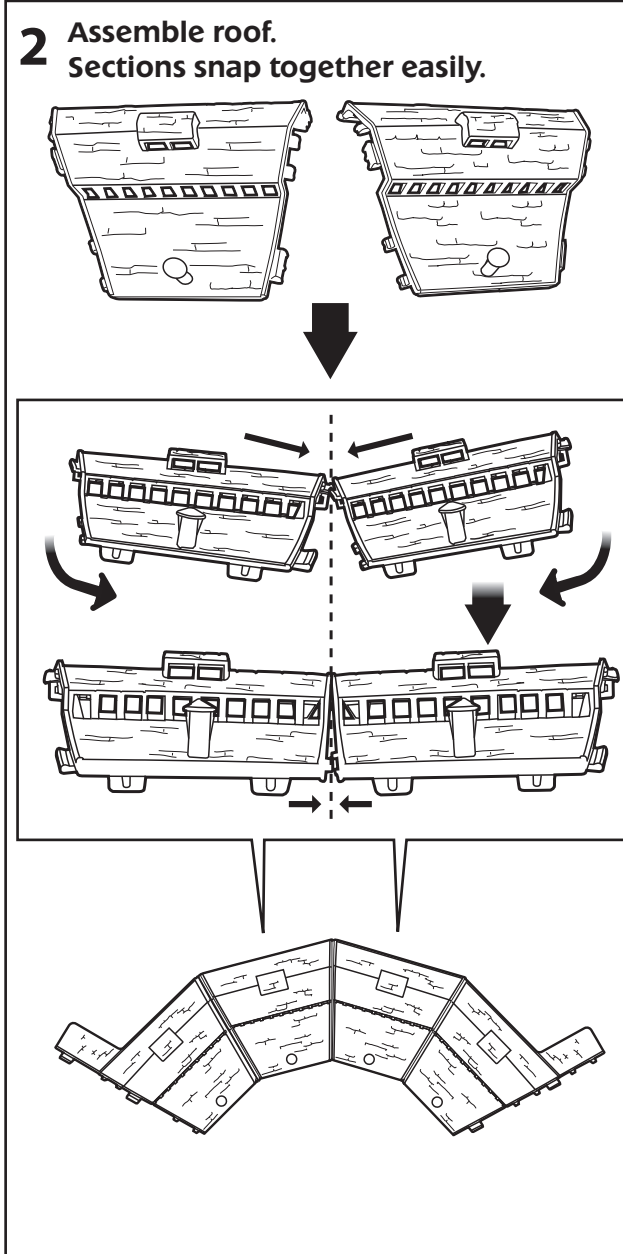
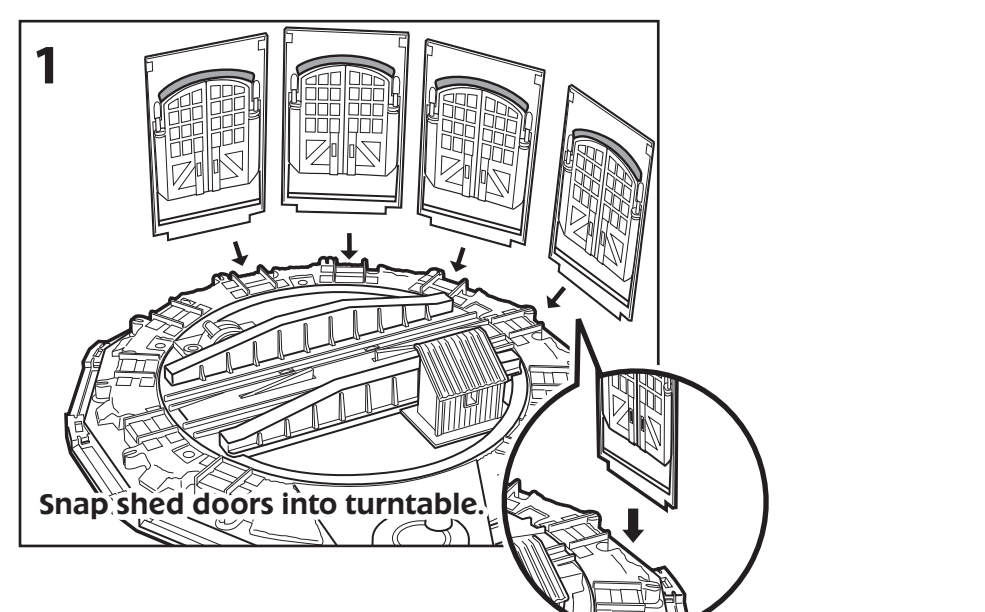


3-Way Tunnel Installation



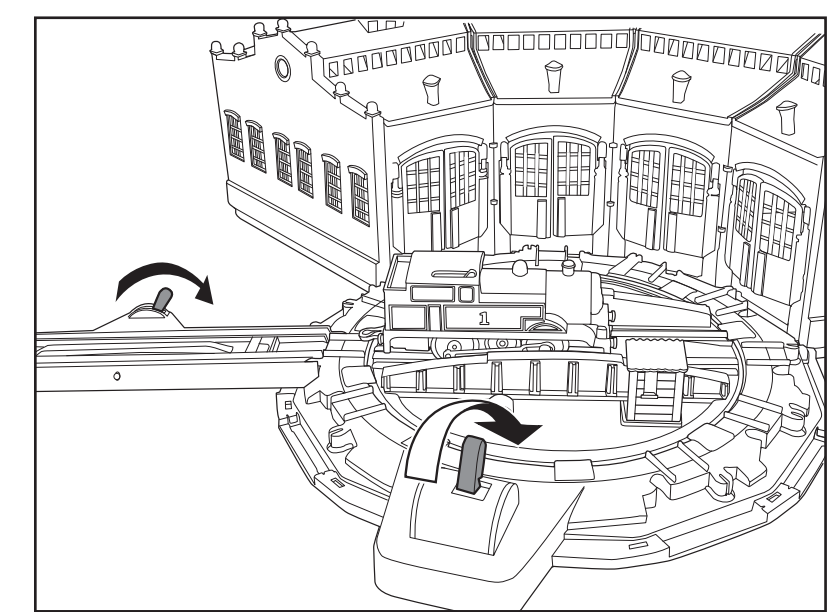
ADULT ASSEMBLY REQUIRED. No tools required for assembly.

Tidmouth Sheds Assembly

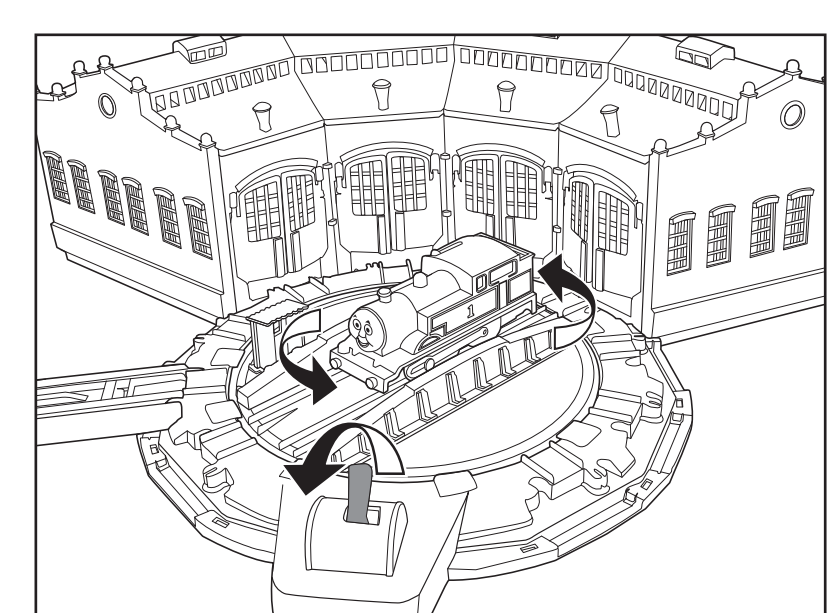


How To Play

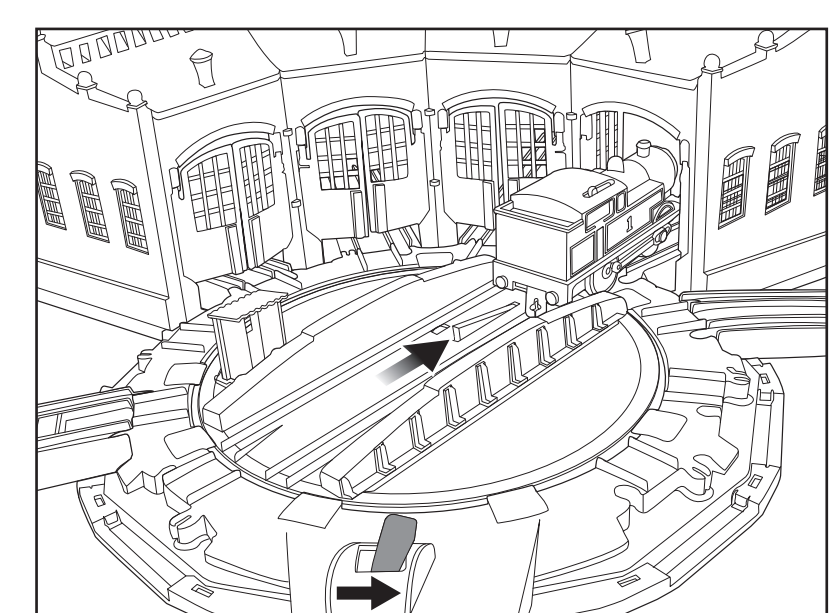
1 Push the lever FORWARD to stop the engine on the turntable. The engine wheels will drive the gears, causing the turntable to rotate.



2 Push the lever BACKWARD to stop the turntable at the desired track section or shed door.



3 Push the lever to the side to release the engine. Keep the lever in the SIDE position to allow the engine to pass over the turntable without stopping.



Item No : V1578-0920
Version : 01
Size : 24.8" x 11.69"
Paper : Woodfree paper 80 gsm
Color : Black
Date : Nov. 11, 2010 (WC)

Instruction page sequence:

Side 1	P.5	P.6	COVER
Side 2	P.2	P.3	P.4